



IEX

Ice-Ex

ICE AND SNOW MELTER

- 10 times better melting performance than salt
- Works at temperatures to -50°C
- Easy to use: ICE-EX is applied by hand or the SPREADER
- Economical: 1kg of ICE-EX can melt 7 to 10m² of ice vs. 1kg of salt can only melt 1m²
- Long-term effectiveness: the water formed by the melted snow and ice will not re-freeze for up to 7 days
- Non-harmful: unlike salt, ICE-EX is hardly corrosive; it is therefore harmless to animal paws, auto bodies, cement sidewalks, garden vegetation...
- Powerful anti-moisture capacity: ICE-EX absorbs up to 5 times its weight of water
- Natural product which dissolves to 100%
- Works Anti-Moisturising in humid areas



General Information

ICE-EX offers a 10 times better melting performance than salt. Due to the unique shape of the pellets they remain lying also on inclined surfaces. ICE-EX works extremely fast at temperatures to -50°C. ICE-EX is hygroscopic, that means: when ice and snow are melted away, on the bottom remains a non-freezing thin layer which guarantees a much longer lasting effect compared to salt.

Rapid re-freezing is therefore prevented. Without renewed snowfall and at normal icing, the effect can last up to several days. ICE-EX can be used also for drying damp rooms, because it deprives the contained humidity in the air. Similarly, it can also be applied on floors e.g. in warehouses to reduce existing moisture or in entrance areas of cold storage rooms to prevent a slippery floor.

Technical Information

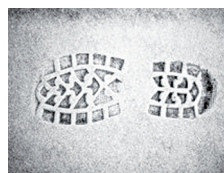
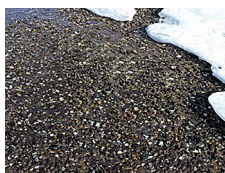
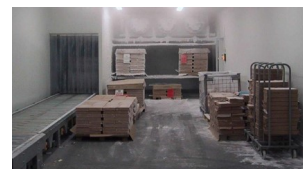
Color: creamy white
Density: about 900g per liter

WARNING: store ICE-EX in a dry location

Application and Use

- APPLICATION:
 - Anti-Ice, Anti-snow: work places, pedestrian passageways, vehicle access ramps (roads, doorways, entrances to stores, factory warehouses, stairways, cold storage rooms...)
 - Anti-moisture (drying): cellars, damp warehouses, secondary residences,...
 - Anti-slippery (drying): entrances to cold stores,...
 - Dust binder on riding arenas
 - Granite, sand and natural stones: Highest material protection, even long-term application does not cause salt marks.
- USE:
 - ANTI-ICE, ANTI-SNOW:
 - Remove bulk of snow or ice.
 - Spread ICE-WX evenly at the rate of 1 to 2kg per 10m².
 - Let absorb: ICE-EX works in and loosens snow and ice.
 - After 15 min., it is possible to remove the ice or snow with a shovel
 - ANTI-MOISTURE/ANTI-SLIPPERY:
 - Place a mesh bag (or nylon stocking) filled with ICE-EX (1kg) over a basin with a capacity of at least 10 liters can anti-moisture about 5 m³ room-volume.
 - The best results are obtained with good ventilation.
 - Nearby entrances of cold storage rooms it prevents a slippery floor

Article nr	Name	Content	Shelf Life	Catalog
X110011	Ice Ex 10kg	10 KG	see imprint + 24 months	SURFACE PROTECTION AND TREATMENT
X110036	Spreader	-	-	TOOLS



Notice

All information including images are given with the greatest care. Still, it is appropriate to users regardless of the test the suitability of each product for their own purposes. Xintex is not liable for the completeness and accuracy of information and refuses warranty for your specific use. The guarantee, which Xintex products provide, relates only to the standard conditions of sale of this product. In no case Xintex can be held responsible for incidental damages, or damages for improper use or sale of the product to another customer.

TECH-MASTERS TRADING GMBH

Perfektastraße 55, 1230 Wien, Austria, Tel +43 (0) 1 / 867 29 07
Fax +43 (0) 1 / 867 29 93, E-Mail office@tech-masters-trading.com

WWW.XINTEX-GROUP.COM