



## PFX

## Pipe Flux

### FAST ACTING DRAIN BLOCKAGE REMOVER

- Dissolves blockage quick and efficient in 3 to 5 minutes
- Very high specific weight
- Penetrates through the wastewater
- Restores drains to full flow
- Will not damage drains, pipes, fittings and other materials
- It is biodegradable.
- PIPE FLUX removes lime, urine stone, soap, grease, hair, protein deposits, compounds of cellulose, tampons and all organic residues.



### GENERAL INFORMATION

PIPE FLUX is a biodegradable product, with clears and maintains all blocked drains rapid and effective without damaging the tubes or fittings.

Because of the very high specific weight PIPE FLUX penetrates immediately through the waste water and restores drains to full flow very fast.

It removes

lime, urine stone, soap, grease, hair, protein deposits, compounds of cellulose, party liners, tampons and all organic residues.

PIPE FLUX does not damage plastics, rubber, steel, metal, lead, or PVC piping or surfaces. To use in all situations of blocked pipes and to maintain pipes.

### Technical Information

Appearance: dense liquid

Colour: brown

Odour: characteristic

Initial boiling point: 300°C

Relative density: 1,83

Solubility: soluble in water

Specific weight: 1,80

Acting time: 3-5 min.

Biodegradable: after 25min neutralized

Concentration: 95% of sulphuric acid

Closing: Cap Child resistant

CAUTION: The product can leave residues or causing damages on magnesium, stainless steel and zinc alloys, Acrylic / Fiberglass, ABS (Acrylic Butadien Styrol), PMMA (Polymetacrylat). Please use the filling and sealing tube.

Safety: Do not lean over the drain when using the Product. Use only in well ventilated areas

Safety measures: consult the Safety Data Sheet.

FOR INDUSTRIAL AND COMMERCIAL USE ONLY!

### APPLICATION AND USE

- PIPE FLUX can be used in showers, floor drains, bathtubs, sinks, Urinals, X-Ray sinks.  
For a blocked drain, remove all excess water and ensure to handle the product with rubber gloves. Pour the product slowly in the blocked pipe and add half litre of water after 30 seconds. Allow to react for about 5 minutes. Then rinse with water. If necessary repeat the process.  
Use only in well ventilated areas.

- Dosage of the product

Pipe size small:

Amount 250 -500 ml / Reaction time 2-3 minutes /

Rinse with water for 1-2 min.

Pipe size 3" - 4":

Amount 500 -750 ml / Reaction time 3-5 minutes /

Rinse with water for 3 min.

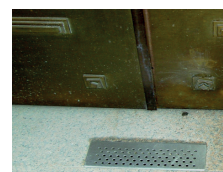
Pipe size 6" - 8":

Amount 750 -1000 ml / Reaction time 5-10

minutes / Rinse with water for 5 min

- Never apply, if other chemical substances are present. Do not pour directly on aluminum, galvanized, chromed parts, magnesium and acryl. Note: in the presence of this materials pour out Drain Clean with the help of our filling tube incl. gasket (D492002) and a plastic hopper.

Article nr	Name	Content	Section
D492002	Demo-Kit Filling Tube	1	DEMOS
X492000	Pipe Flux	750ml	CLEANERS AND DEGREASERS



### NOTICE

All information including images are given with the greatest care. Still, it is appropriate to users regardless of the test the suitability of each product for their own purposes. Xintex is not liable for the completeness and accuracy of information and refuses warranty for your specific use. The guarantee, which Xintex products provide, relates only to the standard conditions of sale of this product. In no case Xintex can be held responsible for incidental damages, or damages for improper use or sale of the product to another customer.

### TECH-MASTERS TRADING GMBH

Perfektastraße 55, 1230 Wien, Austria, Tel +43 (0) 1 / 867 29 07

Fax +43 (0) 1 / 867 29 93, E-Mail office@tech-masters-trading.com

WWW.XINTEX-GROUP.COM